

Yale®

Aluminium jacks

AJS
AJH



Application

Yale hydraulic jacks are universally popular tools for use in workshops or on site for all kinds of lifting and assembly applications, for construction, ship building, power plants, general engineering, metal fabrication and many more.

Applications are limitless.

Standard jacks with plain piston and jacks with safety lock nuts cannot be used with a lifting claw.

To increase stability, all jacks with long stroke (305 mm) are equipped with an elongated base plate.



Back view of
AJH - 620 SR

Yale Aluminium hydraulic jacks

Capacities from 6,5 to 100 tonnes

Aluminium jacks combine light weight with high lifting capacity. The use of high tensile aluminium alloy allows lifting capacities of up to 100 tonnes resulting in a very favourable 1,8 tonnes lifting capacity per 1 kg weight ratio.

Operation of Yale hydraulic jacks is very simple. Jacks are supplied ready for use, i.e. including hydraulic oil, operating lever and, where applicable, carrying handle and lifting claw.

Features

- strokes from 75 to 305 mm
- extremely low weight
- the 6,5 and 10 tonnes jacks can be operated in any position (also upside down) and are equipped with spring return piston and stop ring
- the 20 to 100 tonnes jacks can be operated vertically or front face horizontally
- all jacks are provided with an overload protection valve
- from 20 tonnes capacity with additional mechanical stroke limiter
- all jacks with hardened alloy steel saddle and sensitive lowering valve which is activated by the operating lever
- all jacks from 20 tonnes provided with connection port for pressure gauge or motor pump

Jacks with lifting claw

Jacks from 20 tonnes are available with a lifting claw. In this case the jacks are provided with an elongated base plate. The max. permissible working load of the lifting claws is 40 % of the jack capacity.

Jacks with safety lock nut

Jacks from 20 tonnes can be supplied with a safety lock nut. This device allows absolute safe jacking over a long period. In this case the hydraulic jack can operate like a mechanical support and the hydraulic system can be totally released.

Jacks with plain piston (standard type)

Model	Capacity tonnes	Max. capacity of lifting claw tonnes	Stroke mm	Closed height mm	Base plate dimensions mm	Min. height of lifting claw mm	Weight kg
AJS - 65	6,5	-	75	131	159 x 76	-	3,6
AJS - 104	10,0	-	115	182	171 x 76	-	6,3
AJH - 620	20,0	-	152	265	180 x 120	-	10,9
AJH - 1220	20,0	-	305	440	250 x 120	-	16,7
AJH - 630	30,0	-	152	265	200 x 140	-	15,4
AJH - 1230	30,0	-	305	452	275 x 140	-	23,4
AJH - 660	60,0	-	152	293	250 x 190	-	27,4
AJH - 1260	60,0	-	305	500	340 x 190	-	43,7
AJH - 6100	100,0	-	152	315	305 x 250	-	49,0

Jacks with lifting claw

Model	Capacity tonnes	Max. capacity of lifting claw tonnes	Stroke mm	Closed height mm	Base plate dimensions mm	Min. height of lifting claw mm	Weight kg
AJH - 620 C	20,0	8	152	280	250 x 120	67	14,5
AJH - 1220 C	20,0	8	305	452	250 x 120	67	22,2
AJH - 630 C	30,0	12	152	284	275 x 140	72	20,3
AJH - 1230 C	30,0	12	305	472	275 x 140	72	31,0
AJH - 660 C	60,0	24	152	327	340 x 190	72	43,1
AJH - 1260 C	60,0	24	305	533	340 x 190	72	64,9

Jacks with safety lock nut

Model	Capacity tonnes	Max. capacity of lifting claw tonnes	Stroke mm	Closed height mm	Base plate dimensions mm	Min. height of lifting claw mm	Weight kg
AJH - 620 SR	20,0	-	152	291	180 x 120	-	10,9
AJH - 1220 SR	20,0	-	305	464	250 x 120	-	16,7
AJH - 630 SR	30,0	-	152	294	200 x 140	-	15,4
AJH - 1230 SR	30,0	-	305	480	275 x 140	-	23,4
AJH - 660 SR	60,0	-	152	330	250 x 190	-	27,4
AJH - 1260 SR	60,0	-	305	536	340 x 190	-	43,7
AJH - 6100 SR	100,0	-	152	366	305 x 250	-	53,0

Universal jacks JH

Capacities from 2 to 50 tonnes

Yale universal jacks supply high forces for general operations like lifting, pushing, moving, supporting of all kind of loads.

Features

- robust, long life design
- pressure relief valve
- precise controlled lowering
- additional screw extension of the piston (from 2 to 20 tonnes)
- grooved saddle
- large base plates for increased stability
- JH - 50-2 with two-stage pump
- incl. operating lever



JH - 50-2

Model	Capacity tonnes	Stroke mm	Additional screw extension mm	Closed height mm	Base plate dimensions mm	Pump	Weight kg
JH - 2	2	115	50	181	90 x 95	1-stage	2,7
JH - 4	4	126	60	205	115 x 110	1-stage	3,7
JH - 6	6	130	75	219	115 x 110	1-stage	4,7
JH - 8	8	152	70	225	120 x 120	1-stage	5,7
JH - 12	12	153	80	240	140 x 130	1-stage	8,0
JH - 20	20	153	80	240	160 x 155	1-stage	11,0
JH - 30	30	180	-	280	210 x 180	1-stage	22,0
JH - 50-2	50	178	-	305	255 x 190	2-stage	53,0

Machine jacks with lifting claw from 2 to 15 tonnes

Machine jacks with lifting claw are used in applications where space below the load is restricted, thus preventing the use of traditional lifting equipment.

Features

- offers safe lifting of machines with an extremely low clearance
- incl. safety pressure valve to prevent overload
- large base offers increased stability under load
- pump lever can rotate through 270° (excluding YAM - 2)
- same load can be lifted on either the head or the claw of jack
- spring return of the lifting claw (only YAM - 5 and YAM - 10)
- precision adjustable lowering valve
- jacks are supplied "ready to use" incl. pump lever and are filled with oil



YAM - 10

YAM - 5

Applications

Typical applications for machine jacks are lifting, positioning and transportation of machines, heavy steel constructions or similar loads, as well as general repair and assembly applications, like leveling of high-rise warehouses, heavy duty scaffolds, large frameworks etc.

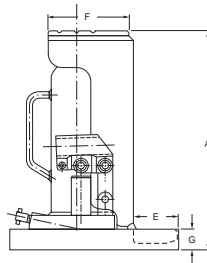
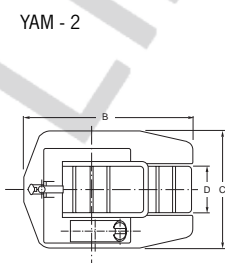


YAM - 2

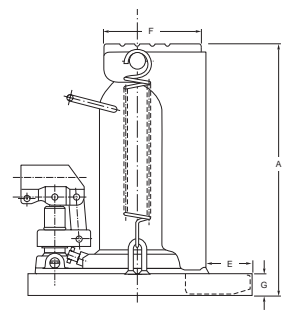
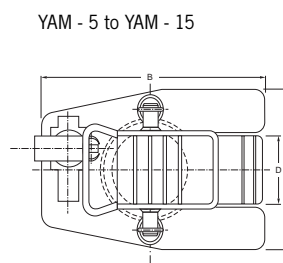
YAM - 15

Model	Capacity on claw and head tonnes	Stroke mm	A mm	B mm	C mm	D mm	E mm	F mm	G mm	Weight kg
YAM - 2	2,0	113	235	180	125	50	50	85	16	8,0
YAM - 5	5,0	120	290	257	182	75	57	117	22	19,0
YAM - 10	10,0	145	325	280	240	100	60	150	28	38,0
YAM - 15	15,0	140	336	292	240	85	60	110	28	41,0

YAM - 2



YAM - 5 to YAM - 15



Hydraulic machine lifters for external pump connection

These lifting units can be used for lifting and positioning of machines, steel constructions, heavy modules or segments and similar large loads.

Features

- "toe lift design" for very low clearance
- lifting claw adjustable to 3 heights
- safe stability due to extendable support feet
- built-in hydraulic cylinder with spring return
- incl. quick connect coupler half CFY - 1 and carrying handle
- can be operated with all high pressure hand pumps or power packs
- or with 4-split flow power packs for „synchronized lifting operations“
- allows safe remote lifting operation
- recommended hand pump HPS - 2/0,7 with hydraulic hose HHC - 20



Model	Capacity tonnes	Stroke	Dimensions in mm								Pressure max. in bar	Weight kg
			A	B	C	D	E	F	G	H		
YAK - 10150	10	150	285	185	255	190	45	40	75	20	700	26,0
YAK - 23160	23	160	320	260	290	250	70	55	80	30	700	45,0

